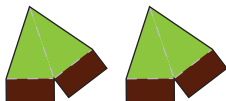




Domo-Zilla

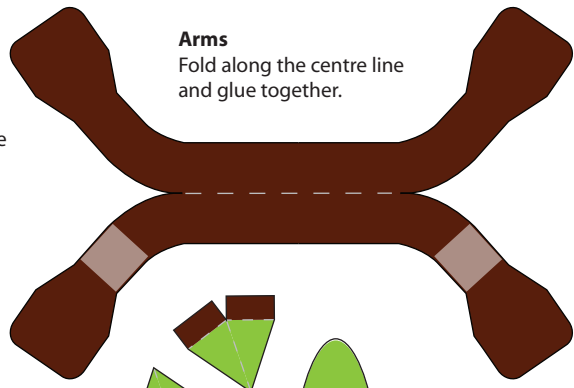
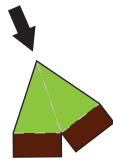
iamkritch.co.uk

Cut along the solid black lines,
score and fold along the dashed grey lines.



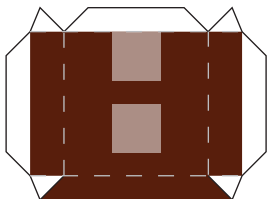
Spines

Fold in half along the centre line and glue the backs of the brown tabs to the light brown rectangles on Domo.



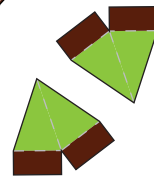
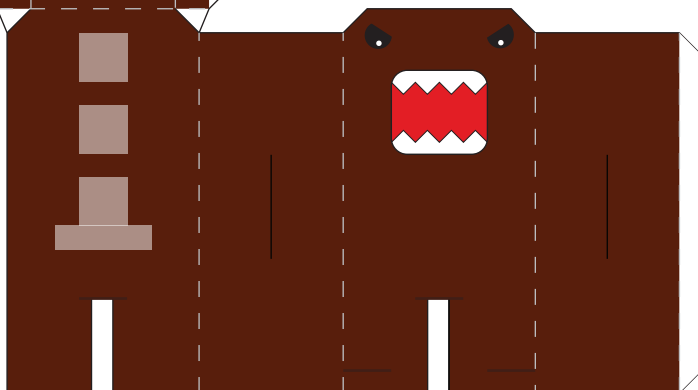
Arms

Fold along the centre line and glue together.



Body

Remember to cut the holes for the arms to fit through.



Tail

Fold along the centre line and glue together. Glue the light brown rectangle to the rectangle on Domo's back.



iamkritch.co.uk